



BYT

podlaží — 1.NP

dispozice — 3+kk

užitná plocha bytu — 103 m²

podlahová plocha bytu — 113 m²

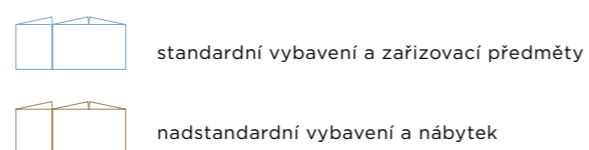
terasa — 26 m²

zahrada — 60 m²

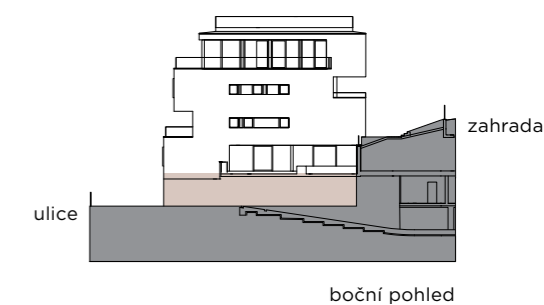
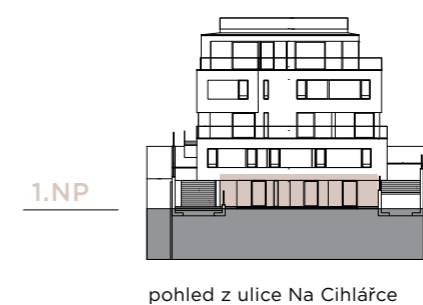
GARÁŽ

garáž — 2 parkovací stání

hobby místnost — 15 m²



Celková plocha bytu je včetně ploch příček a vnitřních nosných stěn dle vládního nařízení č. 366/2013 Sb. Veškeré materiály a informace jsou pouze orientační. Rozsah dodávky je specifikován ve standardech bytu. Investor si vyhrazuje právo na změnu.

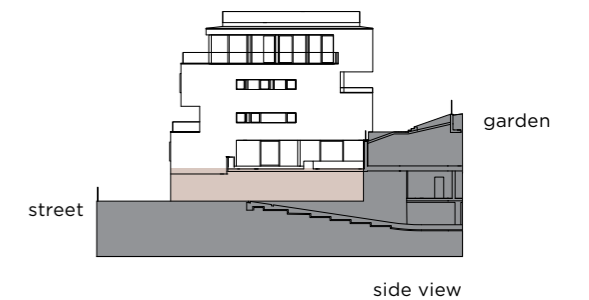
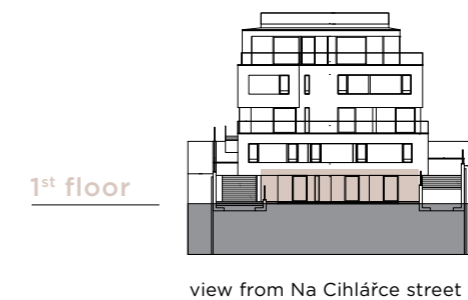
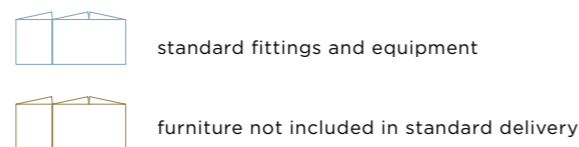


APARTMENT

- floor — 1st floor
- layout — 3+kk
- usable area — 103 m²
- floor area — 113 m²
- terrace — 26 m²
- garden — 60 m²

GARAGE

- garage — 2 parking places
- hobby room — 15 m²



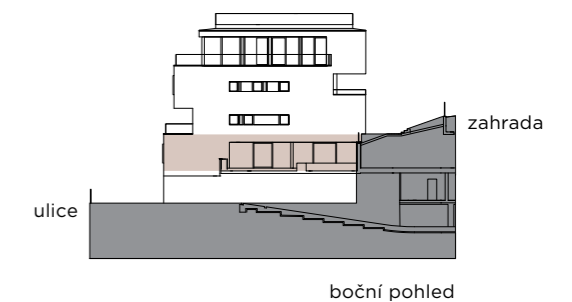
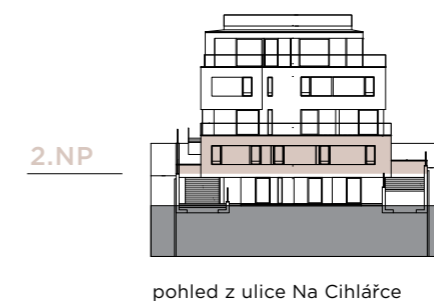
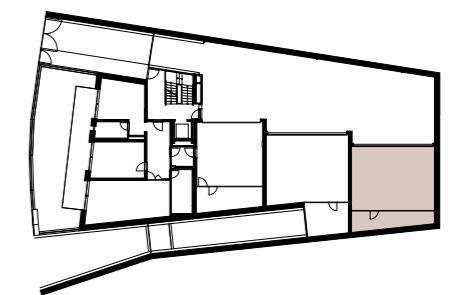


- BYT**
- podlaží — **2.NP**
 - dispozice — **5+kk**
 - užitná plocha bytu — **216 m²**
 - podlahová plocha bytu — **232 m²**
 - terasy — **58 m²**
 - terasa se sníženou částí — **5 m²**
 - vyvýšené záhony — **27 m²**
- GARÁŽ**
- podlaží — **1.NP**
 - garáž — **3 parkovací stání**
 - hobby místnost — **14 m²**



- standardní vybavení a zařizovací předměty
- nadstandardní vybavení a nábytek

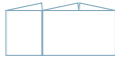

Celková plocha bytu je včetně ploch příček a vnitřních nosných stěn dle vládního nařízení č. 366/2013 Sb. Veškeré materiály a informace jsou pouze orientační. Rozsah dodávky je specifikován ve standardech bytu. Investor si vyhrazuje právo na změnu.

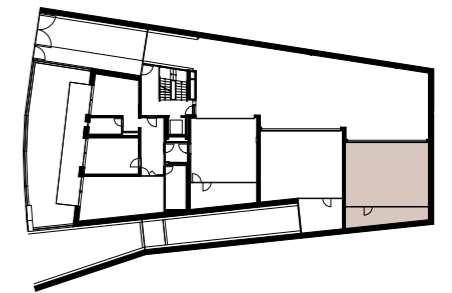




- APARTMENT**
- floor — 2nd floor
 - layout — 5+kk
 - usable area — 216 m²
 - floor area — 232 m²
 - terraces — 58 m²
 - terrace with lower part — 5 m²
 - elevated planting — 27 m²
- GARAGE**
- floor — 1st underground
 - garage — 3 parking places
 - hobby room — 14 m²



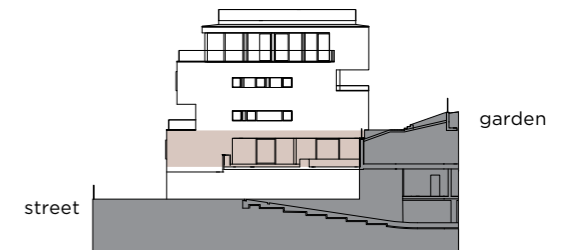
-  standard fittings and equipment
-  furniture not included in standard delivery



2nd floor



view from Na Cihlářce street



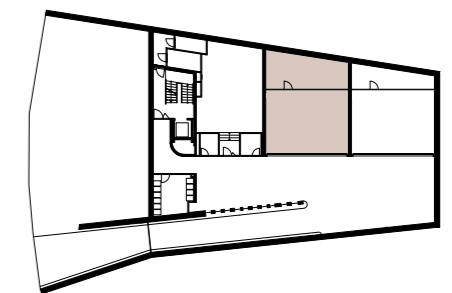
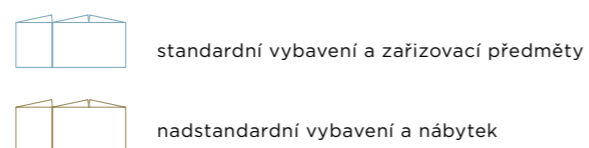
side view

The total area of the apartment includes the areas of partitions and internal load-bearing walls according to Government Regulation No. 366/2013 Coll. All materials and information are indicative only. The scope of delivery is specified in the apartment standards. The investor reserves the right to change.

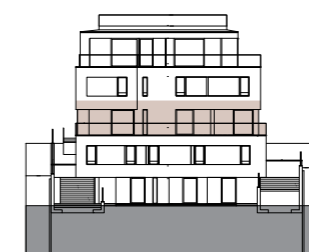


- BYT**
- podlaží — **3.NP**
 - dispozice — **5+kk**
 - užitná plocha bytu — **208 m²**
 - podlahová plocha bytu — **223 m²**
 - terasy — **70 m²**
 - zahrada — **71 m²**

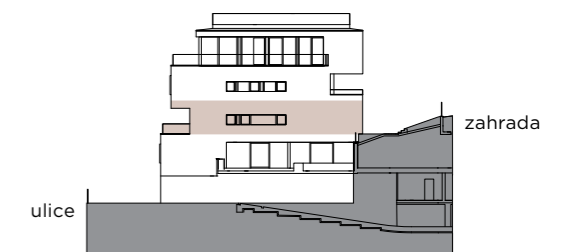
- GARÁŽ**
- podlaží — **1.PP**
 - garáž — **3 parkovací stání**
 - hobby místnost — **27 m²**



3.NP



pohled z ulice Na Cihlářce



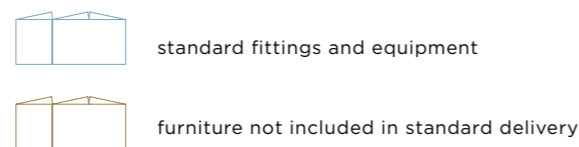
boční pohled

APARTMENT

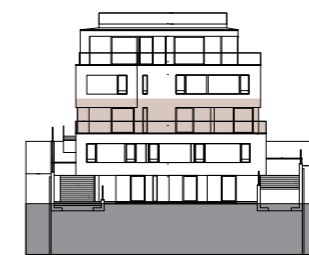
- floor — 3rd floor
- layout — 5+kk
- usable area — 208 m²
- floor area — 223 m²
- terraces — 70 m²
- garden — 71 m²

GARAGE

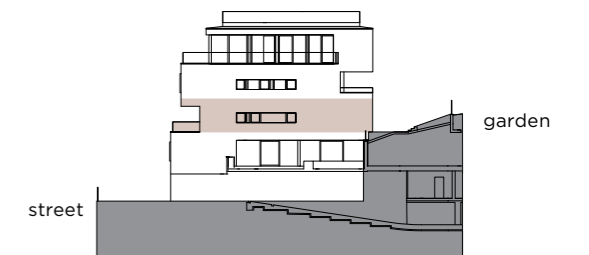
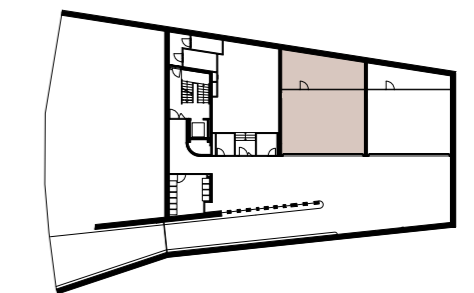
- floor — 1st underground
- garage — 3 parking places
- hobby room — 27 m²



3rd floor



view from Na Cihlářce street

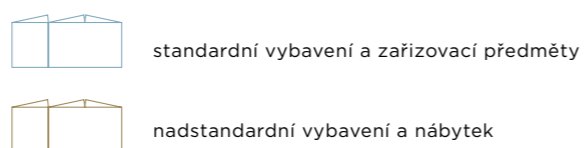


side view

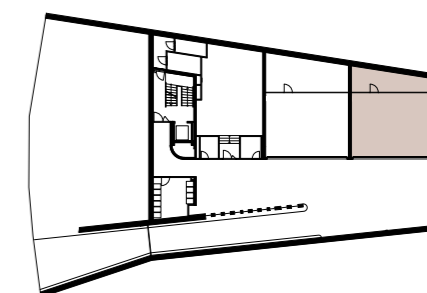


BYT	
podlaží	4.NP
dispozice	4+kk
užitná plocha bytu	184 m ²
podlahová plocha bytu	196 m ²
terasa	25 m ²
vyvýšené záhony	10 m ²

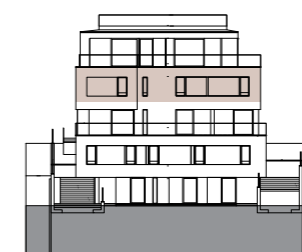
GARÁŽ	
podlaží	1.PP
garáž	3 parkovací stání
hobby místnost	16 m ²



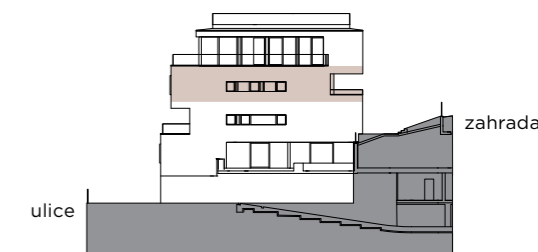
Celková plocha bytu je včetně ploch příček a vnitřních nosných stěn dle vládního nařízení č. 366/2013 Sb. Veškeré materiály a informace jsou pouze orientační. Rozsah dodávky je specifikován ve standardech bytu. Investor si vyhrazuje právo na změnu.



4.NP



pohled z ulice Na Cihlářce



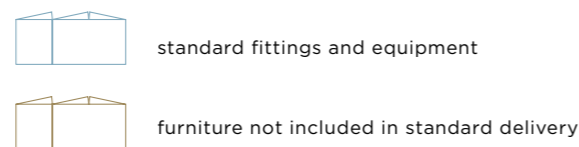
boční pohled

APARTMENT

- floor — 4th floor
- layout — 4+kk
- usable area — 184 m²
- floor area — 196 m²
- terrace — 25 m²
- elevated planting — 10 m²

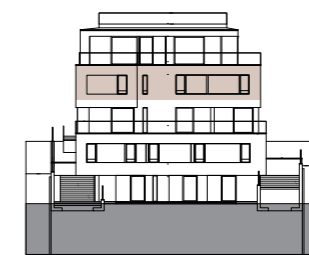
GARAGE

- floor — 1st underground
- garage — 3 parking places
- hobby room — 16 m²

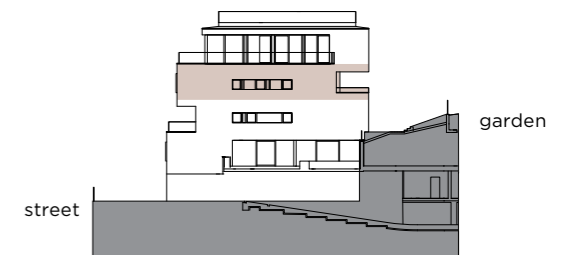
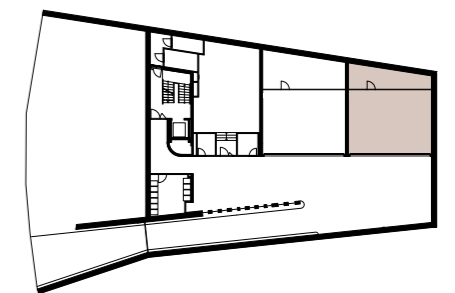


The total area of the apartment includes the areas of partitions and internal load-bearing walls according to Government Regulation No. 366/2013 Coll. All materials and information are indicative only. The scope of delivery is specified in the apartment standards. The investor reserves the right to change.

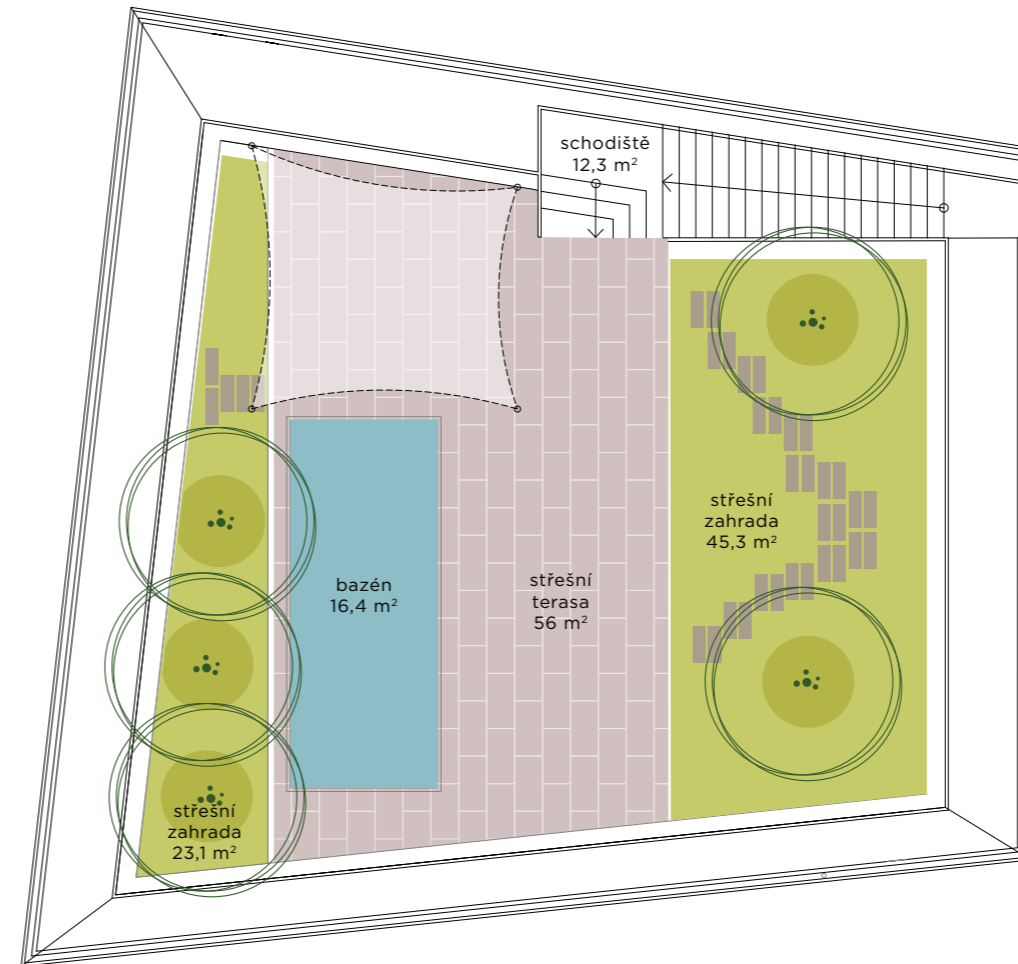
4th floor



view from Na Cihlářce street



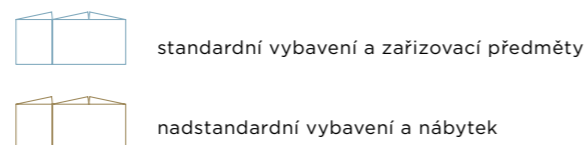
side view



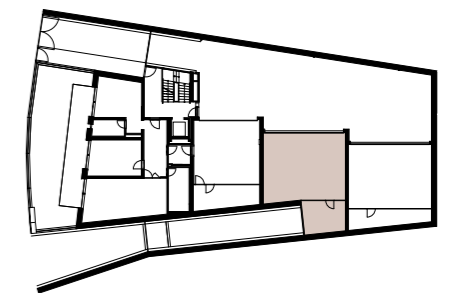
střešní terasa

- BYT**
- podlaží — 5.NP
 - dispozice — 4+kk
 - užitná plocha bytu — 148 m²
 - podlahová plocha bytu — 160 m²
 - terasa — 70 m²
 - střešní terasa a schodiště — 68 m²
 - bazén — 16 m²
 - střešní zahrada — 68 m²
- GARÁŽ**
- podlaží — 1.NP
 - garáž — 3 parkovací stání
 - hobby místnost — 14 m²

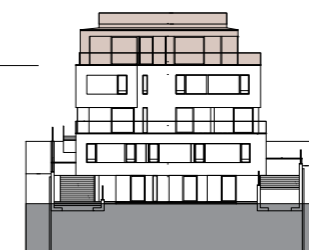
5.NP



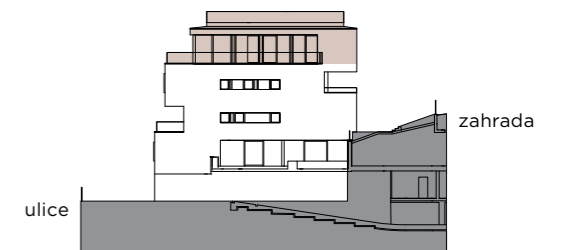
Celková plocha bytu je včetně ploch příček a vnitřních nosných stěn dle vládního nařízení č. 366/2013 Sb. Veškeré materiály a informace jsou pouze orientační. Rozsah dodávky je specifikován ve standardech bytu. Investor si vyhrazuje právo na změnu.



5.NP

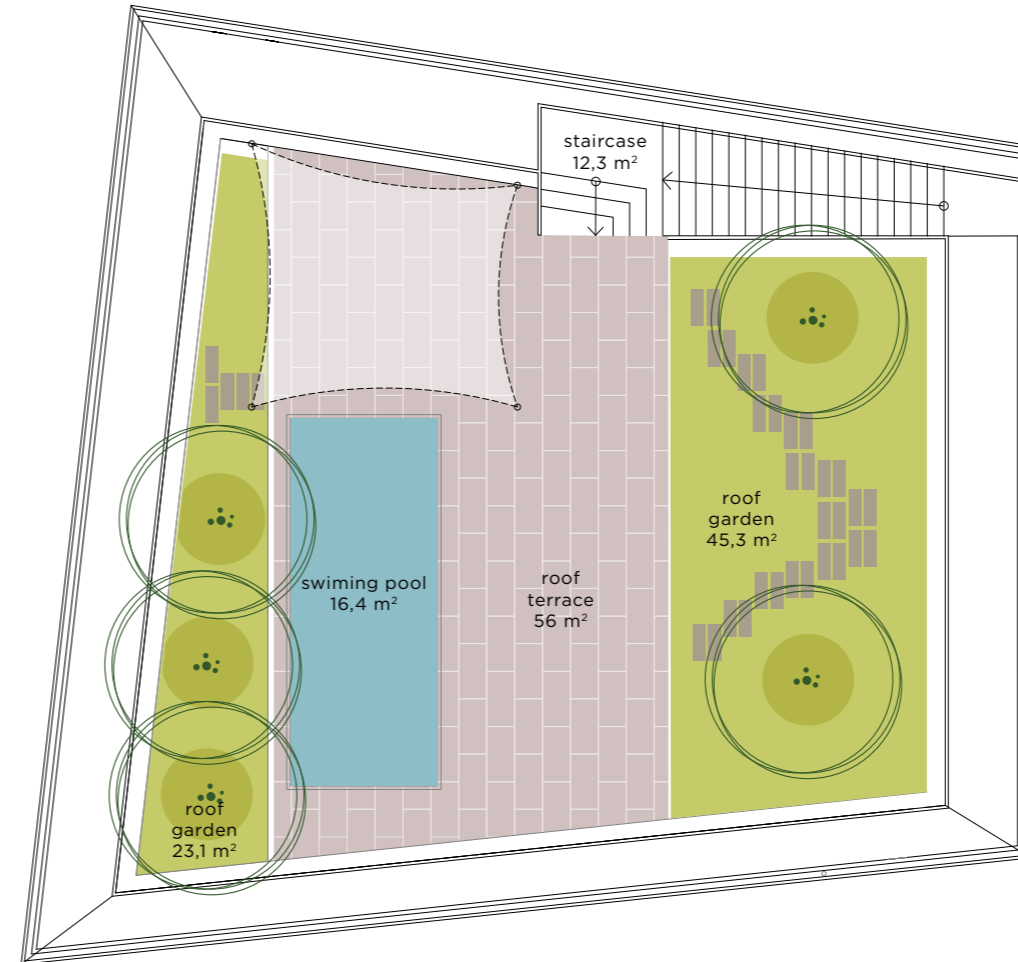


pohled z ulice Na Cihlářce



boční pohled

APARTMENT



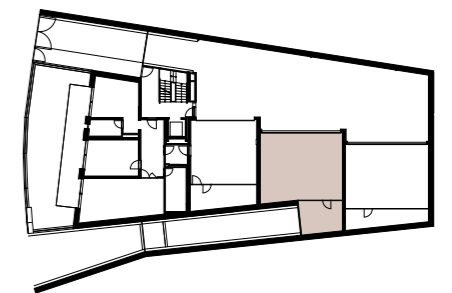
roof terrace

- floor — 5th floor
 - layout — 4+kk
 - usable area — 148 m²
 - floor area — 160 m²
 - terraces — 70 m²
 - roof terrace and stairs — 68 m²
 - swimming pool — 16 m²
 - roof garden — 68 m²
- ## GARAGE
- floor — 1st floor
 - garage — 3 parking places
 - hobby room — 14 m²

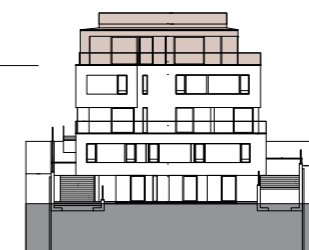
5th floor



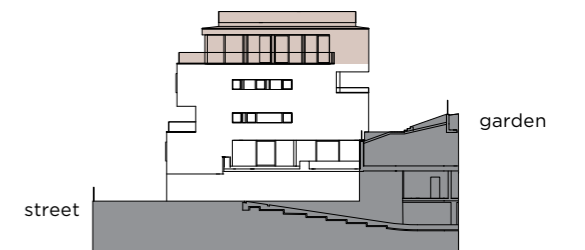
- standard fittings and equipment
- furniture not included in standard delivery



5th floor



view from Na Cihlářce street



side view

The total area of the apartment includes the areas of partitions and internal load-bearing walls according to Government Regulation No. 366/2013 Coll. All materials and information are indicative only. The scope of delivery is specified in the apartment standards. The investor reserves the right to change.



